



Institute of
Forming Technology
and
Lightweight Comp.

TU Dortmund
Faculty Mech. Eng.
Institute of Forming Technology
and Lightweight Components

Prof. Dr. Yannis P. Korkolis

D-44227 Dortmund
Baroper Str. 303
South Campus / Driveway 42
www.iul.eu

SHK/WHF-position

Student assistant in modeling and simulation

We are looking for a student assistant to support our research in the field of material behavior modeling. You can expect to work on experimental, simulation-based, and programming tasks in the area of AI (preferably using Python/PyTorch) and gain insights into research at the intersection of forming technology and machine learning. Contribute your own ideas and take an active role in shaping your work.

Additionally, your involvement may provide the basis for project work, Bachelor's, or Master's theses in the subject area.

Preferred skills and advantages:

- Basic knowledge of forming technology and mechanics
- First experience with programming and simulation
- Flexible working hours and diverse tasks

Application documents by e-mail.

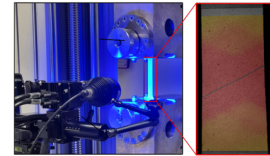
30. November 2025



Contact:

Sebastian Welter Kratzel M.Sc.
MB III, Room 4.027, South Campus
Sebastian.Welter.Kratzel@iul.tu-dortmund.de
Phone.: (0231) 755 - 2669

Experiments for calibration



Datageneration



Data-driven material modeling

